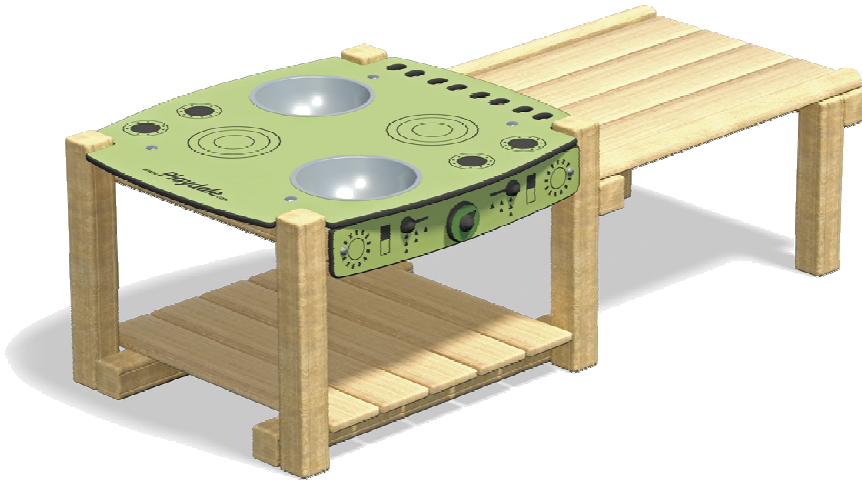


Mud Kitchen 2



Code – MUD/2
Age
3-7 years
Materials
Compact Grade Laminate (CGL)
Sawn Timber
Stainless Steel
Bolts
Various Plastic Mouldings

Product Description

An easy clean mud kitchen that encourages imaginative and cooperative play.

Technical Information

Equipment Dimensions

Length / Width / Height **1.6m x 0.8m x 0.6m**

Surfacing and Area Required

Recommended Minimum Space
L/W/H **3.6m x 2.8m x 3.1m**

Max Gradient of Ground **1 in 30**

Free Height of Fall **N/A**

Suggested Hardstanding **9.2m²**

Synthetic Area
(i.e. EPDM / Wetpour / Synthetic Grass etc.) **N/A**

Loosefill at 150mm
(i.e. Bark / Cushionfall / Sand) **N/A**

Grasslok **N/A**

Installation Information

SGF

SF (if different)

Installation Time **1 Person(s) 8 Hour(s)**

Overall Weight **50kg** **48kg**

Heaviest Part **12kg** **12kg**

Largest Part **0.8m x 0.7m x 0.1m** **0.8m x 0.7m x 0.1m**

Longest Part **0.9m** **0.9m**

Concrete Required **0.17m³** **0.17m³**

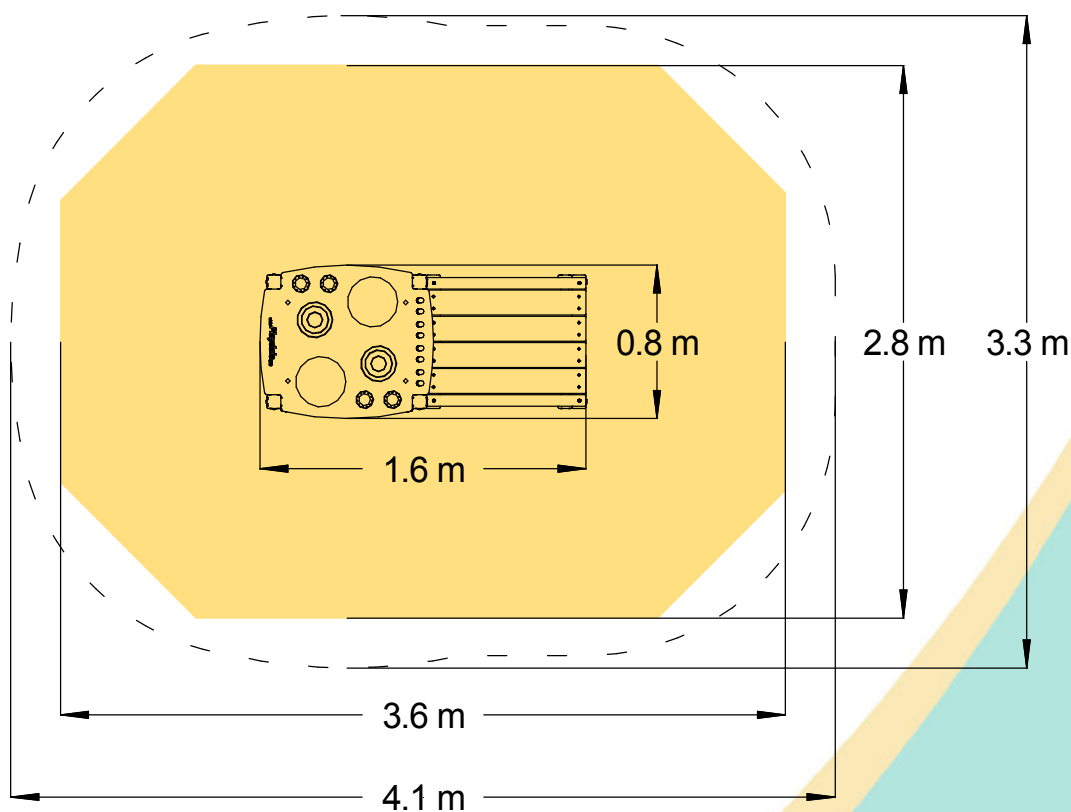
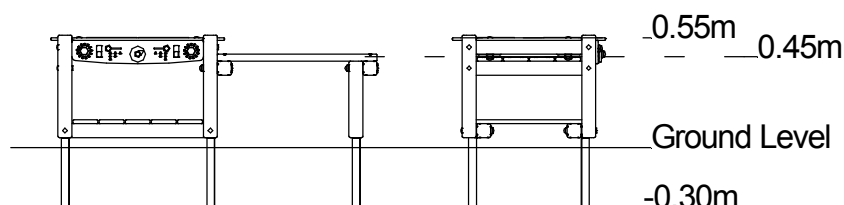
Certified to ASTM F1487

[Click here for more information & downloads](#)



<https://www.playdale.co.uk/playground/educational-play/mud-kitchen.html>

-  Loosefill Area
-  Suggested Hardstanding
-  Free Space
-  Unit Spacing Boundary



[Click here for more information & downloads](#)

